

054386

RECEIVED
LARAMIE COUNTY
CHEYENNE, WY.

CERTIFIED LAND CORNER RECORDATION

'89 FEB 21 PM 1 10

DESCRIPTION OF CORNER EVIDENCE FOUND, AND ORIGINAL RECORD (If known)

CE1/16 S.2
T.14N., R.70W.
6th P.M.

Found G.L.O. Brass Cap marked as shown below, projecting 4" above ground, 30' S. of trail.

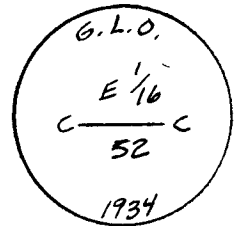
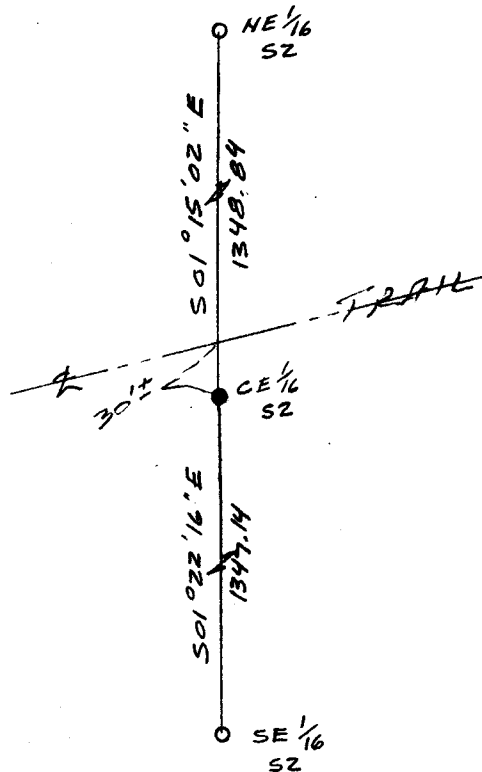
G.L.O. Record: Set 1" diameter x 3' long iron post, 27" in ground, with Brass Cap marked as shown.

DESCRIPTION OF MONUMENT AND ACCESSORIES ESTABLISHED TO PERPETUATE THE ORIGINAL LOCATION OF THIS CORNER:

At the corner: Not remonumented.

Accessories : See ties below.

SKETCH, WITH COURSE AND DISTANCE TO ADJACENT CORNER IF DETERMINED IN THIS SURVEY. (May Sketch or Paste Reproduction on Reverse Side.)

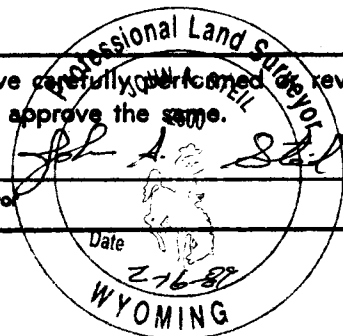


I, John A. Steil certify that I have carefully examined and reviewed the work done on the diagrammed corner as reported on this recordation form and approve the same.

Signature of Surveyor

L.S. 2500

Registration No.



STATE OF WYOMING,
Office of Clerk and Recorder,
County of _____

This "corner record" was filed for record on the _____ day of _____, 19____, was noted on the cross-index plat and is assigned page No. _____, in book No. _____.

James C. Whitcomb
County Official

Cross Index No.	C-20	T.	14N	R.	70W	Mer.	6th
						Mer.	
						Mer.	
						Mer.	
						Mer.	
						Mer.	
						Mer.	
						Mer.	